

SEX WORKER COMMUNITY-LED RESPONSES TO COVID-19



RECOMMENDATIONS



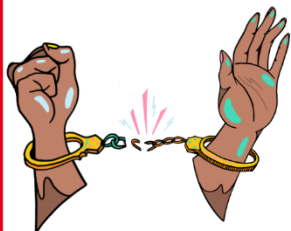
Sex worker communities must be directly involved in developing and implementing responses to COVID-19 and future pandemics



Sex workers must be included in national social protection schemes including health insurance and sick pay, and other emergency responses



Sexual and reproductive health and HIV treatment services must not be disrupted during pandemics or other humanitarian crises and must be more sustainably funded



Governments, policymakers and civil society advocates must actively work towards the full decriminalisation of sex work, including sex workers, clients and third parties

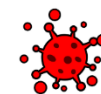


Read the NSWP Smart Sex Worker's Guide to Community-led Responses to COVID-19:

<https://www.nswp.org/resource/smart-sex-workers-guide-community-led-responses-covid-19>

Images by Molly Hankinson

SEX WORKER COMMUNITY-LED RESPONSES TO COVID-19



Sex workers were among the hardest hit at the start of the COVID-19 pandemic and continue to be impacted by this global public health crisis.



Protection measures in many countries, such as lockdowns and curfews, as well as shortages of medications and reduction in treatment prevented sex workers from accessing vital health services.



Read the NSWP Smart Sex Worker's Guide to Community-led Responses to COVID-19:

<https://www.nswp.org/resource/smart-sex-workers-guide-community-led-responses-covid-19>

Images by Molly Hankinson

SEX WORKER COMMUNITY-LED RESPONSES TO COVID-19



As governments failed to provide adequate assistance in their emergency responses and social protection mechanisms, sex worker-led organisations around the world stepped up to support their communities.

Best practices of community-led support include:

Provision of food, money and medical supplies



Knowledge and skills building

Political campaigning and awareness raising

Support with access to services and navigating bureaucracy

Emotional support and solidarity

SEX WORKER COMMUNITY-LED RESPONSES TO COVID-19



Sex worker-led initiatives to support sex workers during COVID-19 show that community-led responses are the most effective way to save communities during global health crises.



Sex worker-led organisations were often restricted by insufficient financial resources for responding to the different needs of community members.



Read the NSWP Smart Sex Worker's Guide to Community-led Responses to COVID-19:
<https://www.nswp.org/resource/smart-sex-workers-guide-community-led-responses-covid-19>

Images by Molly Hankinson



Read the NSWP Smart Sex Worker's Guide to Community-led Responses to COVID-19:
<https://www.nswp.org/resource/smart-sex-workers-guide-community-led-responses-covid-19>

Images by Molly Hankinson